



Beardsley Drive

Chelmsford, CM1 6ZG

£240,000



Boasting its OWN PRIVATE GARDEN and being sold with NO ONWARD CHAIN is this FREEHOLD one bedroom house - offered for sale by Hamilton Piers of Springfield, further offering an entrance hall, double bedroom, wet room, lounge with open plan kitchen and private residents parking. Call Hamilton Piers' Springfield office to view!



Beardsley Drive, Chelmsford, CM1 6ZG

Ground Floor:-

Entrance Hall:

Entrance door to open plan living area, bathroom.

Open Plan Living Area:

Lounge:

18'10" x 13'00" (5.74m x 3.96m)

Double glazed windows to rear, stairs to first floor, electric heater.

Kitchen:

7'2" x 6'11" (2.18m x 2.11m)

Range of wall and base units, rolled edge work surfaces with sink inset, integrated low level oven, electric hob with extractor over, space for washing machine.

Wet Room:

Obscure double glazed window, fully tiled bathroom, shower to wall, low level W/C.

First Floor:-

Bedroom:

11' x 9'1" (3.35m x 2.77m)

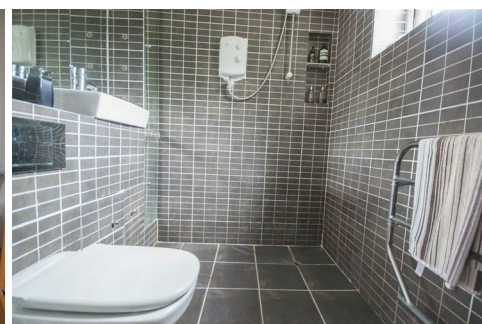
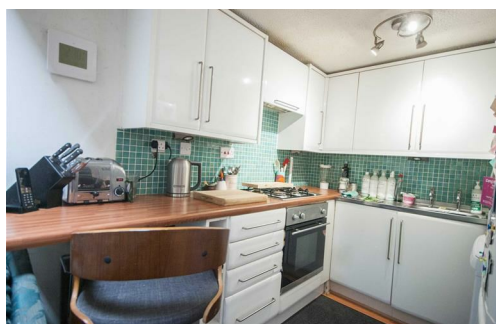
Double glazed window to front, and skylight window to side, fitted wardrobes.

Exterior:-

Residents parking available.

Garden:

Gated side access, decking area and shed, rest laid to lawn.



At Hamilton Piers we aim to ensure our particulars are accurate and reliable. However, they do not constitute any offer or contract, nor are they to be taken as statements or representations of fact. No tests have been carried out by us in respect of services, systems or appliances contained in the specification and no guarantee as to their operating ability or efficiency is given (unless stated otherwise).

All measurements are a guide only and, therefore, can be approximated in some cases. If purchasing, fixtures and fittings, apart from those mentioned in the particulars, are to be agreed with the seller. Some particulars, please note, may also be awaiting the seller's approval. If clarification or further information is required, please contact us.

AWARD WINNING SALES AND LETTINGS ACROSS ESSEX

01376 341 141 | 01245 269 777 | 01621 212 450 | 01371 809 500 | 0207 079 1510

